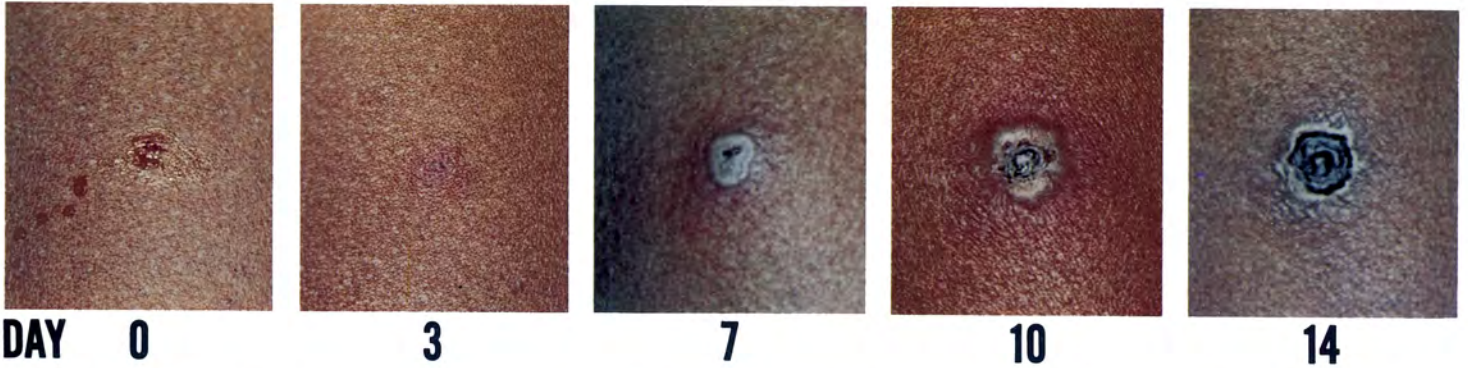


Figure 2

**RESPONSE TO PRIMARY VACCINATION
Multiple Pressure Compared with Jet Injection**

Multiple pressure - undiluted vaccine - subject AA009



Jet Injection - 0.1ml "ID-Jet 1" vaccine – subject BA022

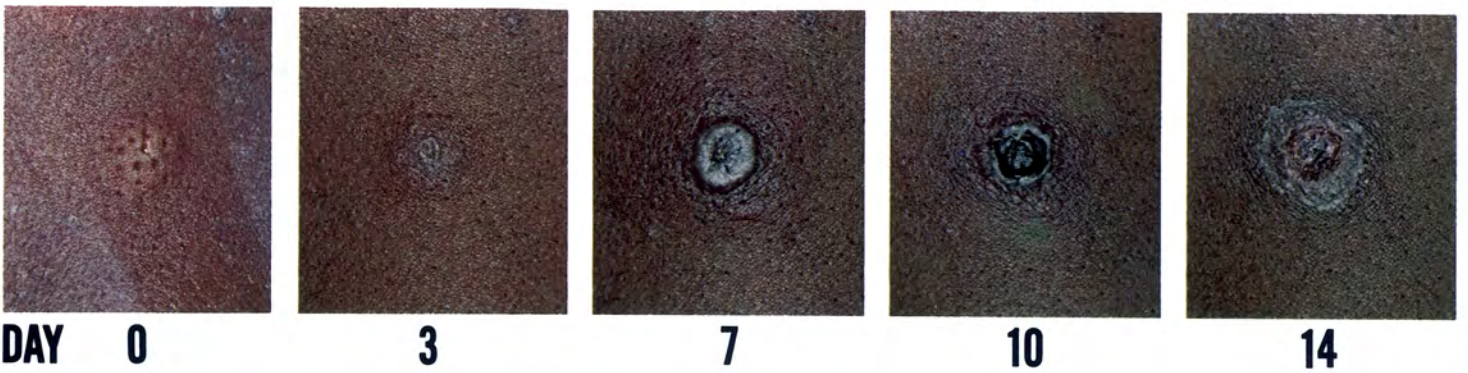
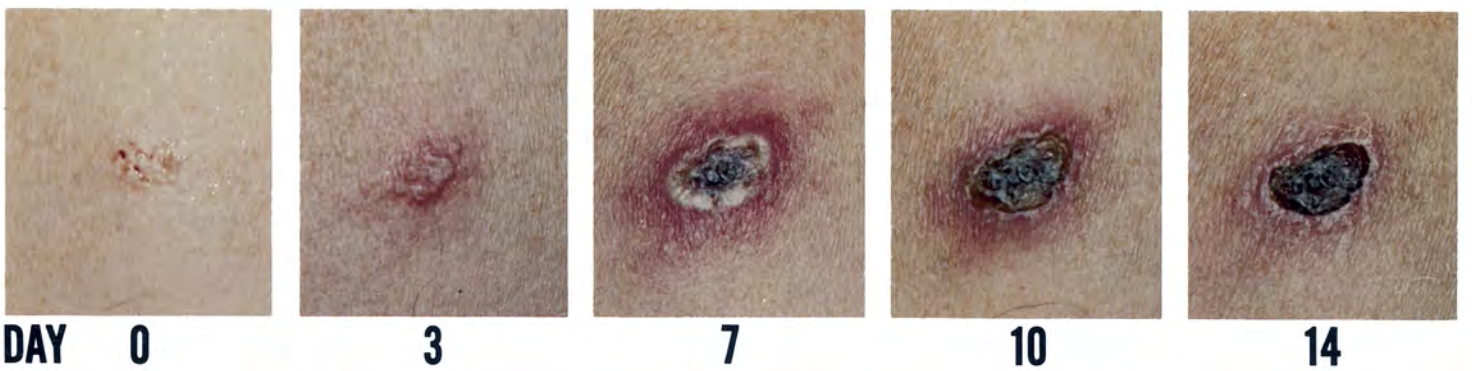


Figure 1

**RESPONSE TO LATE REVACCINATION
Multiple Pressure Compared with Jet Injection**

Multiple pressure - undiluted vaccine - subject AA033



Jet Injection - 0.1ml "ID-Jet 1" vaccine – subject BA044

